



## SERIES 4000 LINE GATE VALVES

### TECHNICAL DATA SHEET



### Features

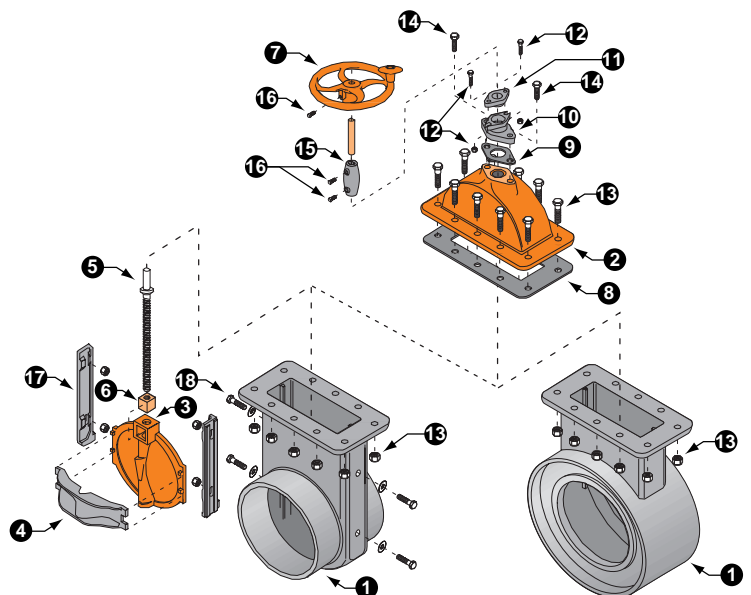
- Precision machined seating surfaces provide watertight seal.
- Bronze lift nut and stem ensure smooth operation and corrosion resistance.
- Heavy-wall Cast Iron construction for lasting performance.
- Removable bonnet allows easy access to internal components.
- Single center wedge design distributes uniform pressure across the seat.
- Non-rising stem with leak resistant packing gland.
- Available in sizes 6" thru 24".

### Series 4000 Line Gate Valves

### Material Specifications

Item	Description	Material	Specification
1	Body	Cast Iron	ASTM A126, Class B
2	Top	Cast Iron	ASTM A126, Class B
3	Slide	Cast Iron	ASTM A126, Class B
4	Bar	Brass	ASTM B584, C93200
5	Stem	Brass	ASTM B584, C93200
6	Lift Nut	Cast Iron	ASTM A126, Class B
7	Handwheel w/knob	Cast Iron	ASTM A126, Class B
8	Body Gasket	Steel, plated	ASTM A307, A164
9	Top Gasket	Cast Iron	ASTM A126, Class B
10	Stuffing Box	Cast Iron	ASTM A126, Class B
11	Gland	Cast Iron	ASTM A126, Class B
12	Gland Bolts, Nuts	Steel, plated	ASTM A307, A164
13	Body Bolts & Nuts	Steel, plated	ASTM A307, A164
14	Stuffing Box Mounting Bolts	Steel, plated	ASTM A307, A164
15	Handle Coupler	Cast Iron	ASTM A126, Class B
16	Set Screws	Cast Iron	ASTM A126, Class B
17*	Removable Guides	Cast Iron	ASTM A126, Class B
18*	Guide Bolts & Nuts, Wshrs.	Steel, galvanized	ASTM

\*Model 40B



**Model 40B**  
(for Plastic Pipe)

**Model 40A**  
(for Concrete Pipe)

### Applications

The Series 4000 PW & YW Gate Valves are in-line gate valves used to shut off and regulate distribution lines, at pumps and in field irrigation systems.

# SPECIFICATIONS

## SERIES 4000 LINE GATE VALVES

### Pressure Rating

Maximum seating ..... 60' (26 psi)  
 Maximum unseating ..... 10' (4.5 psi)

### Installation

The Model 40A Valve is designed for use with concrete pipe. The hub ends allow for mortared installation to the ends of the pipe.

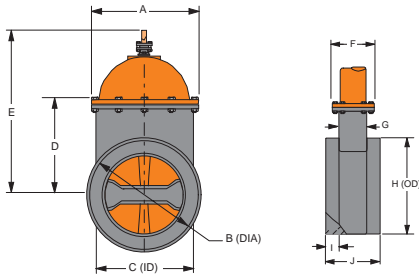
The Model 40B Valve is designed for use with plastic pipe, the outside of the valve stubs are epoxied to the inside of the plastic pipe. Draw bands may be used to provide additional strength at the joint.

### Options

- Bronze seating surfaces
- Rising Stem
- Custom-sized steel stubs for PVC or steel pipe
- 25 lb. or 125 lb. flanged ends
- Stem extensions
- Special coatings
- 2" square operating nut

### Model 40A

#### Gate Options for Concrete Pipe

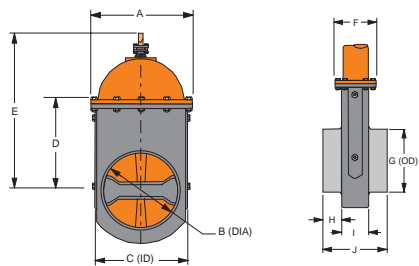


#### Dimensional Information - 40A

Gate Size (Inches)	Dimensions (Inches)									
	A	B	C	D	E	F	G	H	I	J
8	12.00	7.88	11.06	9.25	22.53	6.00	3.75	11.56	1.50	6.62
10	14.38	10.00	13.88	12.25	24.50	6.38	4.19	14.50	1.62	7.25
12	16.62	12.12	16.00	14.19	29.44	7.31	4.75	16.62	1.75	8.25
14	19.50	14.00	18.12	16.12	32.38	7.50	4.88	18.75	1.75	8.38
16	21.25	16.00	20.00	17.12	34.38	7.88	5.38	20.75	1.75	8.75
18	24.00	17.94	22.88	19.12	38.50	9.00	5.81	23.50	2.00	10.00
20	26.50	20.00	26.00	21.44	47.22	10.00	7.00	27.06	2.25	11.50
24	29.75	24.00	31.25	24.88	51.75	11.62	8.75	32.50	2.38	15.88

### Model 40B

#### Gate Options for Plastic Pipe



#### Dimensional Information - 40B

Gate Size (Inches)	Dimensions (Inches)									
	A	B	C	D	E	F	G	H	I	J
6	9.62	5.50	8.31	6.88	18.25	5.75	5.88	2.50	3.81	8.75
8	12.00	7.44	10.25	8.88	20.53	6.00	7.88	2.50	4.00	8.94
10	14.38	9.31	12.50	12.19	24.66	6.38	9.88	4.00	4.00	12.12
12	16.62	11.31	14.75	13.94	28.47	7.31	11.88	4.75	4.75	11.88
15	19.50	14.44	17.50	15.81	32.03	7.50	14.88	4.88	4.88	11.75
18	24.00	17.94	22.88	19.12	38.50	9.00	17.88	4.50	5.81	16.12
20	26.50	20.00	26.00	21.44	47.22	10.00	19.88	4.00	7.00	17.25
24	29.75	24.00	31.25	24.88	51.75	11.62	23.88	3.50	8.75	19.62



Fresno Valves & Castings, Inc.

7736 East Springfield Avenue  
 P.O. Box 40, Selma, CA 93662, U.S.A.

**(800) 333-1658**

www.fresnovalves.com